

WHAT IS OUR MAIN GOAL?

Climate Assemblies and Living Labs are recognised as effective and rational instruments for fostering deliberative democracy in climate policy formation.

The objective of the CLIMAS project is to facilitate a shift towards climate resilience by providing a cutting-edge, problem-focused climate adoption Toolbox to existing and future Climate Assemblies.

HOW DO WE SUPPORT DELIBERATIVE DEMOCRACY?

CLIMAS project will use design-thinking with citizens, stakeholders and practitioners to create transformative and inclusive tools that stimulate deliberative democracy in climate policymaking.

WHAT NEEDS AND CHALLENGES ARE WE GOING TO ADDRESS?

CLIMAS emerged as a response to the **dual crisis of citizens' participation in democracy and climate change**. Advocates argue that short election cycles hinder addressing long-term climate challenges, while citizen-led assemblies offer greater ambition. CLIMAS addresses them through **integrating policy action with a comprehensive, all-encompassing approach**.

OBJECTIVES

- Increase awareness about climate emergency in the EU regions
- Democratise Climate Assemblies shifting from an extraordinary policy event to an ordinary policy event
- Foster Climate Assemblies to ensure the voice of citizens is heard by policy makers through structured interactions
- Promote cooperation, inclusivity, gender transformative and anti-patriarchal deliberative process

01 Get ready and explore: identify barriers and facilitators of citizen participation

Start with the identification of barriers, drivers, bottlenecks, and good practices in past Climate Assemblies throughout Europe.

02 Engage, empathise, empower: co-create the Toolbox

Build empathy and define the problem through design-thinking, citizen science and value-based approaches in Living Labs; involve citizens and stakeholders in the co-creation of a Toolbox that is useful to all people involved in Climate Assemblies at any level.

03 Test with end-users: test the Climate change citizens engagement Toolbox in Climate Assemblies

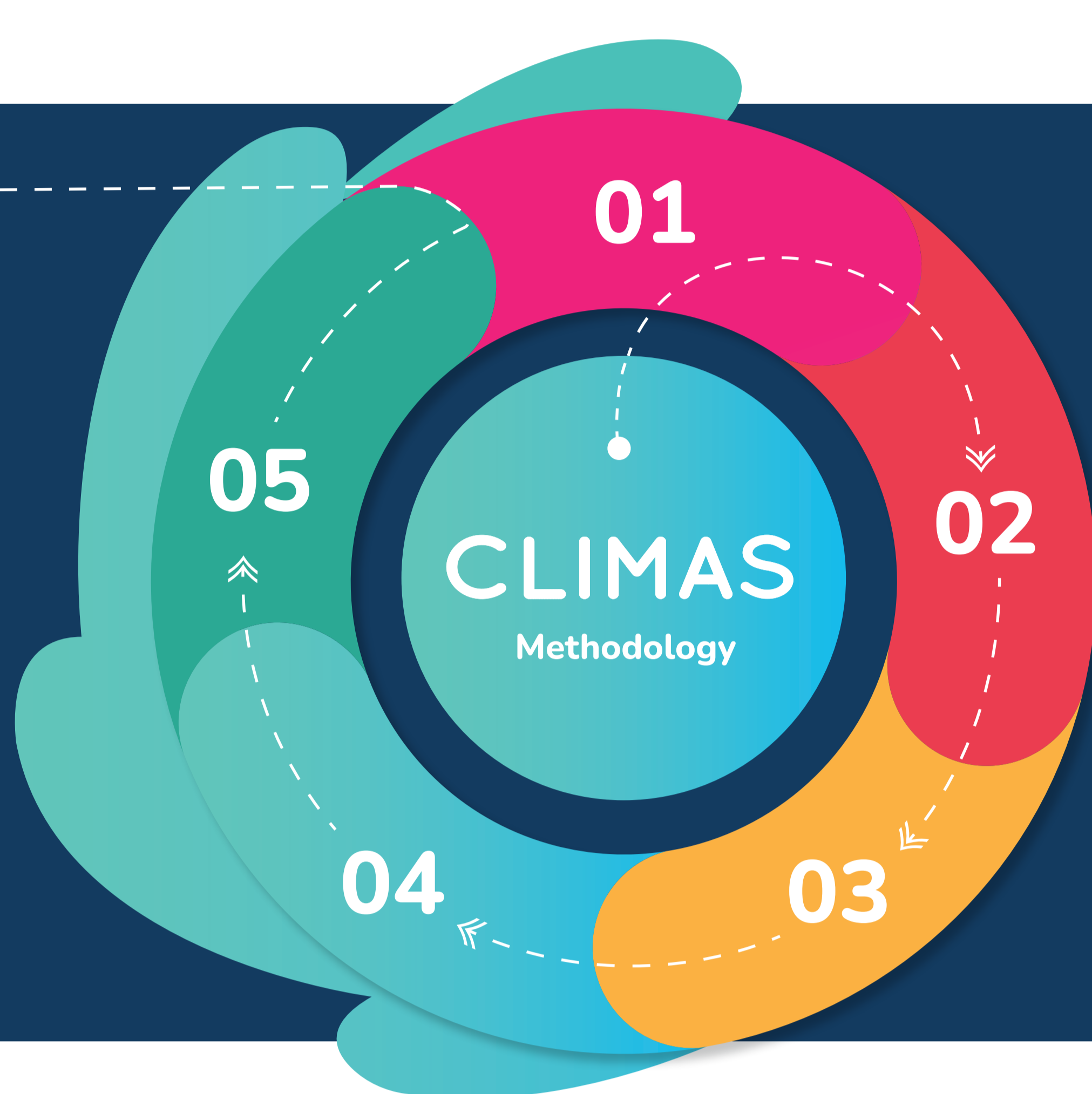
Test the prototype tools in actual Climate Assemblies and Living Labs ensuring that they respond to the needs of people who might benefit from it: Climate AssemblyCA promoters, organisers, participants, and local authorities.

05 Share broad and wide: ensure impact

Continuously deliver training sessions and share knowledge with all relevant stakeholders, including cross-exchanges. Promote empowerment and engagement through dedicated campaigns across the different EU regions.

04 Elaborate recommendations: involve citizens in policy-making processes

Deliver innovative climate assembly guidelines for practitioners, facilitators and policy makers promoting them across Europe.

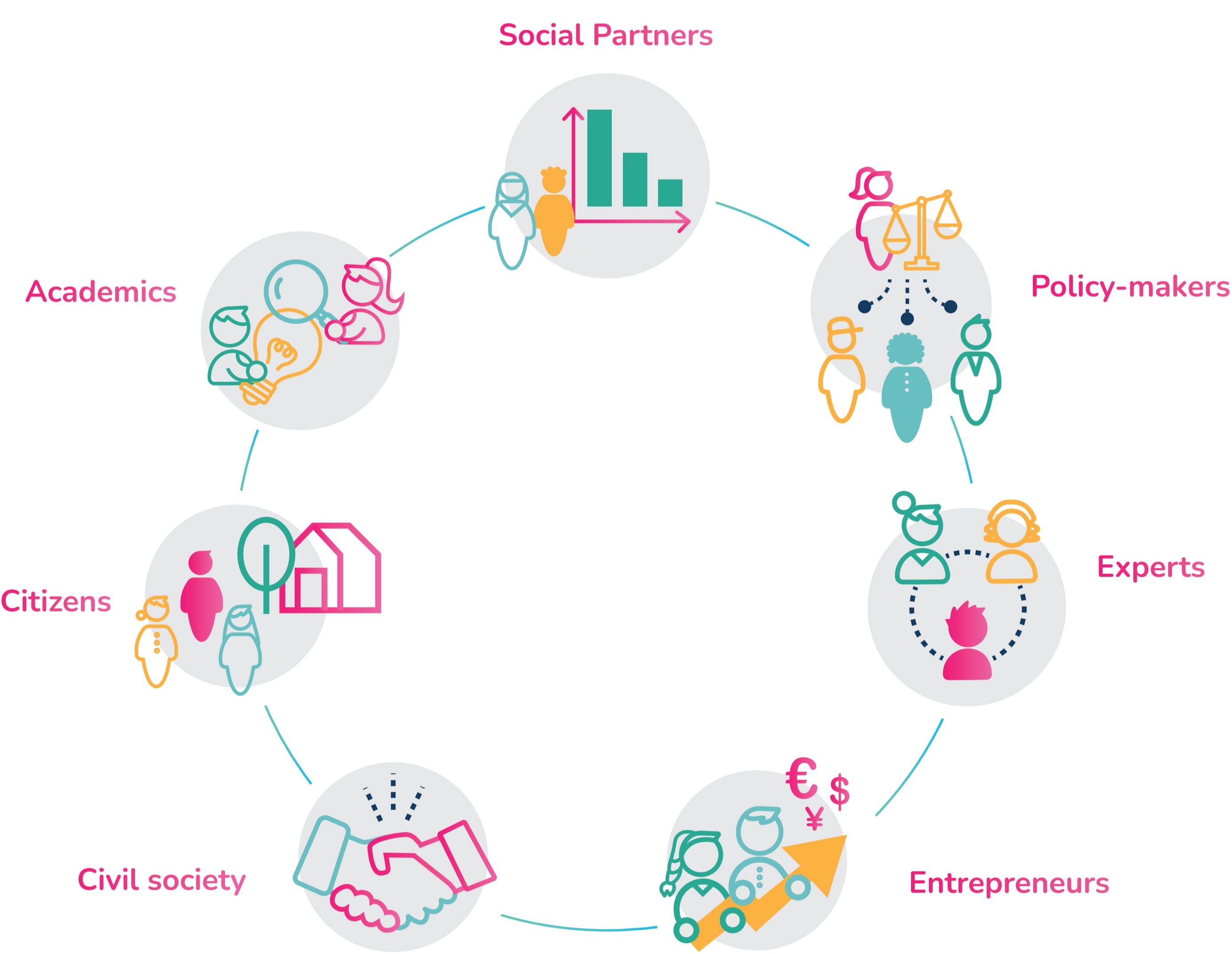


WHAT DO WE PROPOSE?

A Toolbox co-designed using a value-based approach to offer **methodologies and guidelines** for **facilitators** of the Climate Assemblies, and for **policy-makers** to deal with the adaptation problems.

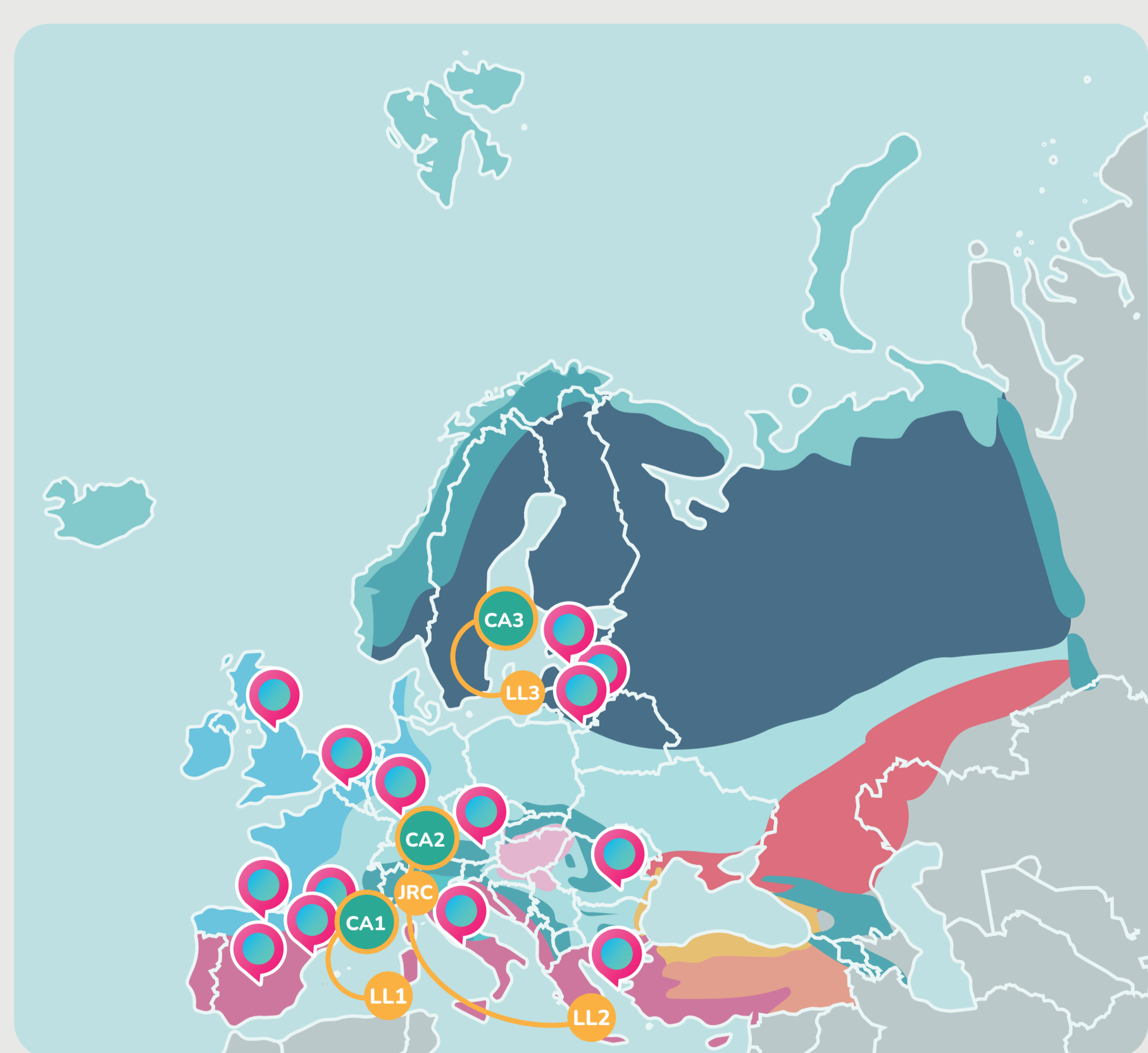
WHO DO WE INVOLVE IN THE CO-CREATION PROCESS?

CLIMAS research is being carried out with a gender and diversity-sensitive approach, ensuring inclusivity and equity.



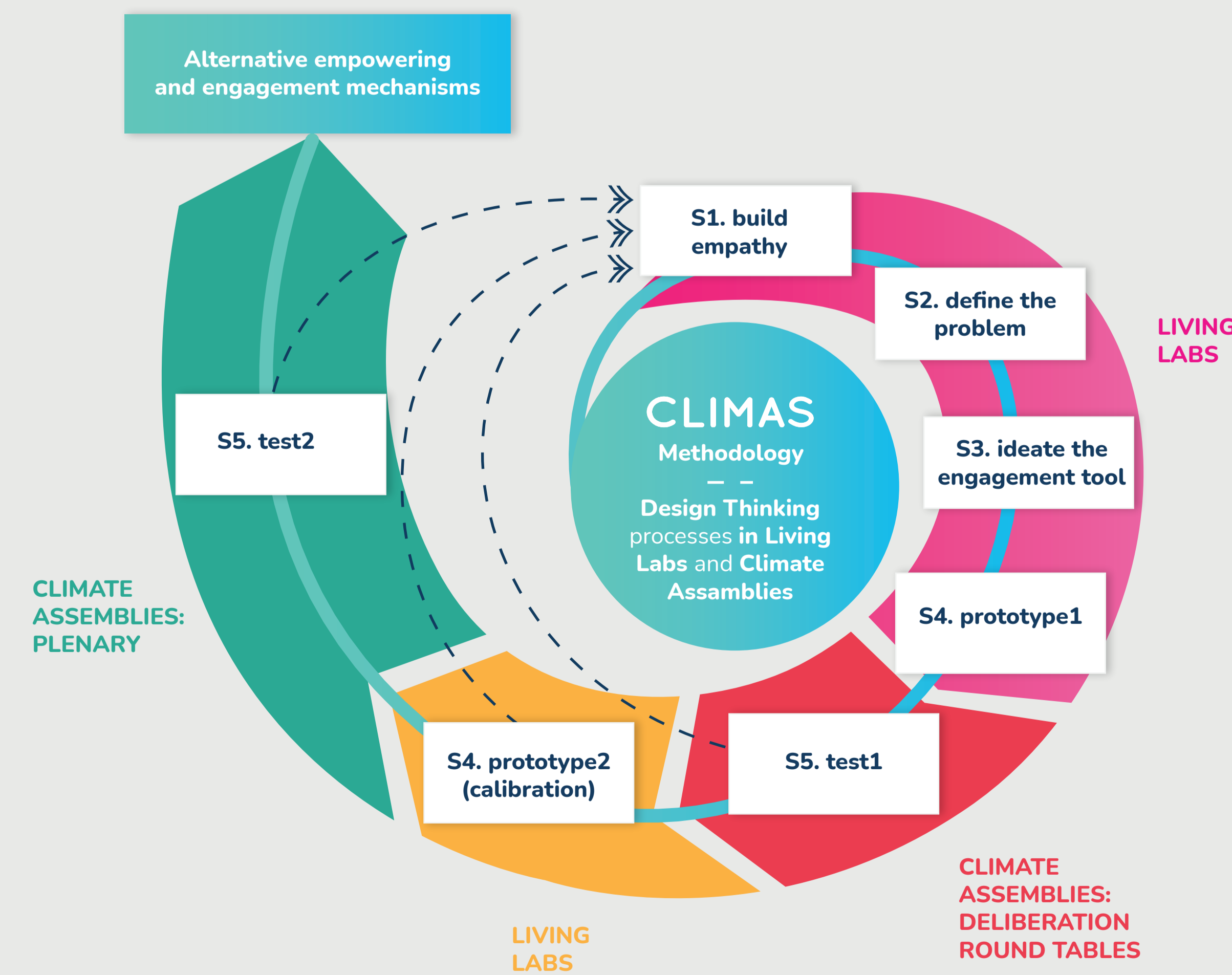
CO-CREATION NETWORK

The CLIMAS project involves practitioners and citizens from the different European bioclimatic regions in an iterative design-thinking process.



- Biogeographical regions of Europe**
- Arctic
 - Boreal
 - Atlantic
 - Continental
 - Alpine
 - Pannonian
 - Mediterranean
 - Macaronesian
 - Steppic
 - Black Sea
 - Anatolian

DESIGN THINKING PROCESS



CONTACTS

Project Coordinator:
Aelita Skaržauskienė
VILNIUS TECH
aelita.skarzauskiene@vilniustech.lt

Scientific Coordinator:
Floriea Di Ciommo
Cambiamo
floriea.di.ciommo@cambiamo.net

Project timeline:
January 2023 - December 2025

SOCIAL



WEBSITE AND CONTACTS

